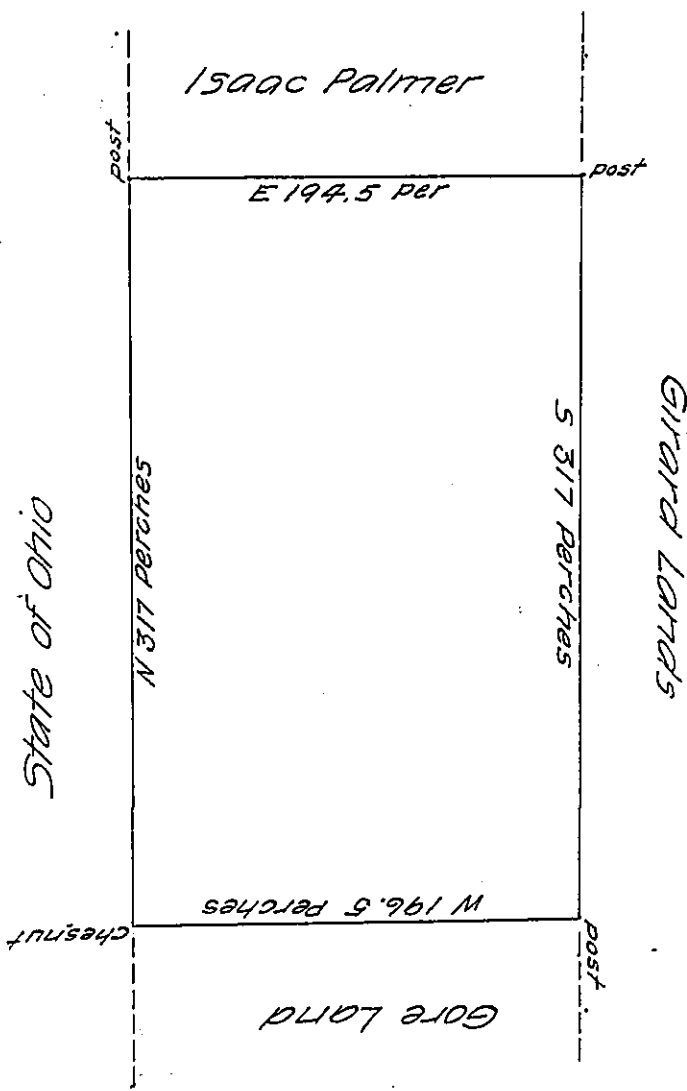


FORM NO 1.



A draught of a tract of land situate in Courtautt township Erie County on the waters of Courtautt Creek surveyed on the 27<sup>th</sup> day of September 1836 for Elias Salsbury by virtue of his warrant dated the thirteenth <sup>day of June</sup> 1836 containing three hundred and sixty seven acres and fifty two perches and allowance of six per cent for roads &c.

S Skinner D.S.

Erie County ss. I hereby certify that from the books and documents in the Deputy Surveyor's office for said County it appears that the above described land is not appropriated to any one other than the said Elias Salsbury & contains a small improvement commenced about three years ago given under my hand & seal the 29<sup>th</sup> day of September A. D. 1836

John Taylor Esq<sup>r</sup>

S Skinner D.S.



S.G.

IN TESTIMONY that the above is a copy of the original remaining on file in the Department of Internal Affairs of Pennsylvania, made conformably to an Act of Assembly approved the 16th day of February, 1833, I have hereunto set my Hand and caused the Seal of said Department to be affixed at Harrisburg, this nineteenth day of March 1907

*George R. Brown*  
Secretary of Internal Affairs.